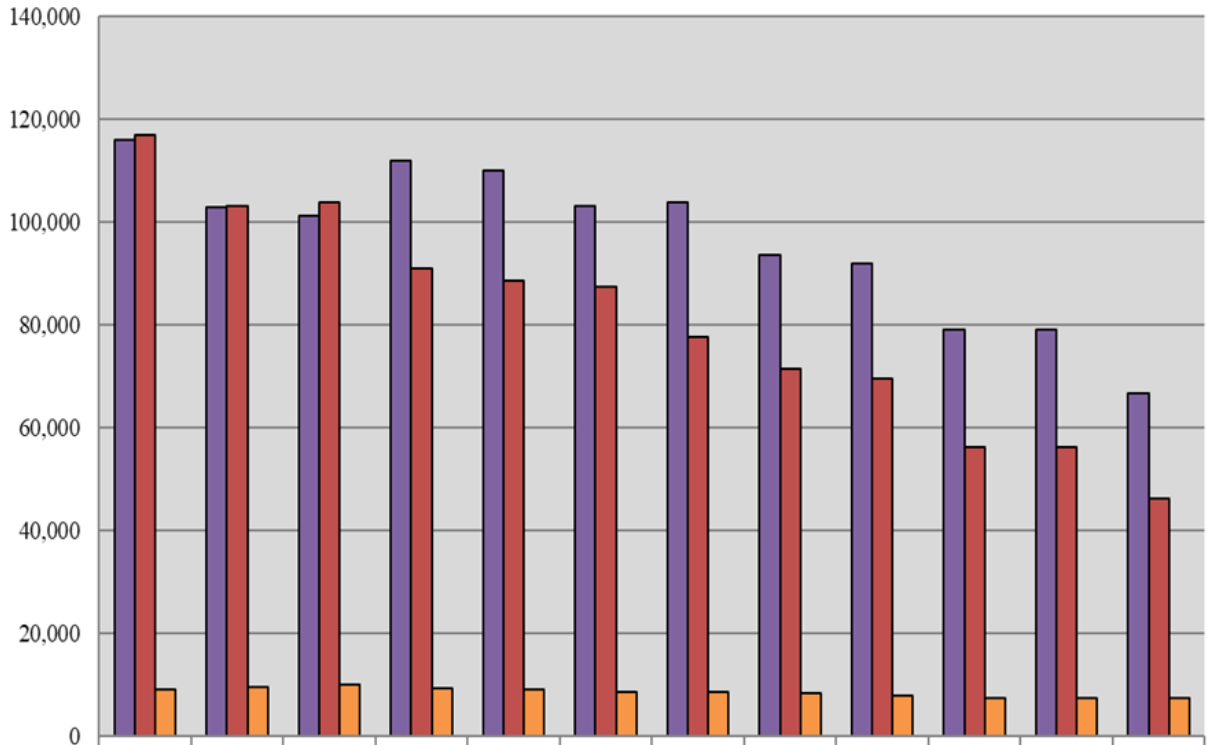


Court of Common Pleas 10-Year Criminal Caseload Trend



	2010	2011	2012	2013	2014	2015	2016	2017	2018	2019	2020	2021
Misdemeanor Filings	115,882	102,939	101,284	112,004	110,071	103,176	103,825	93,630	92,008	79,162	79,162	66,737
Misdemeanor Dispositions	116,926	103,209	103,802	90,873	88,507	87,366	77,673	71,401	69,504	56,322	56,322	46,296
Preliminary Hearings	9,066	9,590	9,917	9,398	9,011	8,621	8,689	8,402	7,798	7,520	7,520	7,521

Fiscal Year